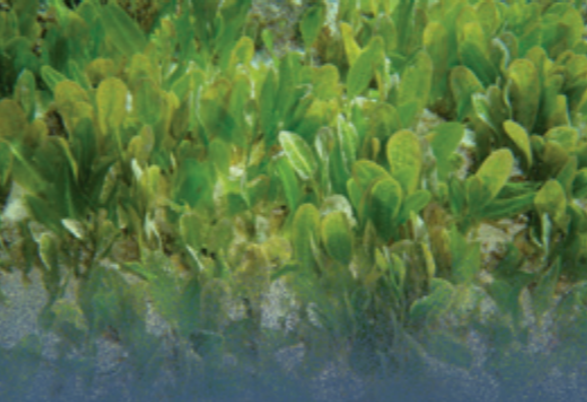


North Bay Sanctuary Zone

This zone covers reef and lagoon north from North Passage. It protects the outer wave washed reef community with its deep coral encrusted spur and groove coral formations, and the sheltered lagoon, dominated by extensive stands of delicate branching corals with their associated diverse fish and invertebrate fauna. It also protects the most extensive bed of seagrass in the Lord Howe Island Lagoon.



Neds Beach and Admiralty Islands Sanctuary Zone

A distinctive type of reef with large foliose and vase shaped hard corals, whip corals, black coral, fan gorgonians, crinoids, colonial ascidians, coralliomorphs, basket stars and hydroids occupies this zone. Despite their ability to withstand strong currents, these organisms are vulnerable to physical damage from anchors and fishing gear.

Observatory Rock Sanctuary Zone (see map overleaf)

The submerged banks of Observatory Rock and surrounding boulder field are characterised by numerous large crevices, caves and overhangs. This habitat supports a very high diversity of species usually found in much deeper water, including the rare Ballina Angelfish delicate branching forms of corals, hydroids and bryozoans which are vulnerable to damage from anchors and fishing gear. The sanctuary zone surrounds Observatory Rock out to 50 metres from the high water mark.

Balls Pyramid Sanctuary Zone (see map overleaf)

This zone covers all of the Balls Pyramid section of the marine park south of 31° 46.388', and includes South East Rock and Sunken Rock. The zone protects a range of biological communities not recorded from the Lord Howe Island Section, including fish and invertebrates which live on the slopes of the sea-mount that descend to over 2 kilometres deep.



Sylphs Hole Sanctuary Zone

This small zone extends to all areas within 50 metres of a yellow sanctuary-zone-marker-buoy at the centre of Sylphs Hole. It protects the coral and fish community that populates the fringes of this sandy depression in the lagoon floor associated with a fresh water spring in Hunter Bay. This community is dominated by two distinctive species of coral that are used as shelter by a diversity of fish and invertebrates. Both Green and Hawksbill Turtles are commonly seen here.

Lord Howe Island Lagoon Sanctuary Zone

This sanctuary zone covers the central section of the barrier reef and lagoon from south of Blackburn Island to Erscotts Passage.

The northern boundary can be found by aligning the southern edge of Blackburn Island with the northern end of the airport rock break-wall. The southern boundary runs from the promontory just north of Lovers Bay through Erscotts Passage.

The zone extends westward to a line between North and South Heads. The shoreline boundary is offset from the mean high water mark by 50 metres to allow for shore-based fishing from the beach.

This area supports an amazing concentration of marine biodiversity, and includes species found nowhere else. Two sand filled depressions in the lagoon floor which are flanked by particularly dense and diverse coral communities, known as Comets Hole and Erscotts Hole, are included within the zone.



Lord Howe Island World Heritage Area



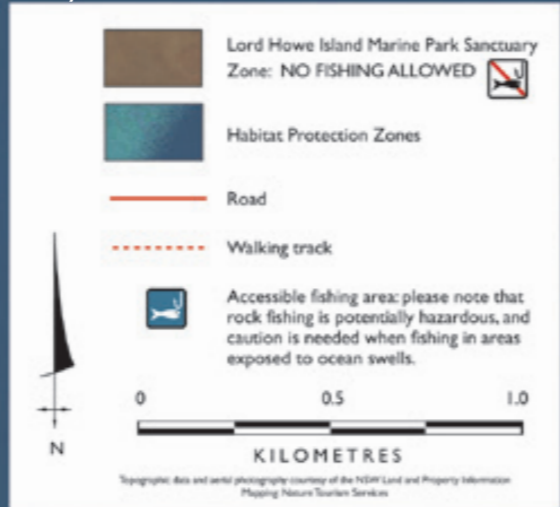
Strong currents run at times, particularly out of the lagoon through the reef channels, at Blinky Beach and at offshore locations.

Lord Howe Island is surrounded by the open ocean, and the waters are frequented by a variety of sharks. The most common, the Galapagos whaler shark, usually ignores people, but you should not swim where fish are being fed, killed or cleaned. Sharks are usually absent from the shallow waters of the lagoon during the day, but do frequent the lagoon from dusk to dawn.

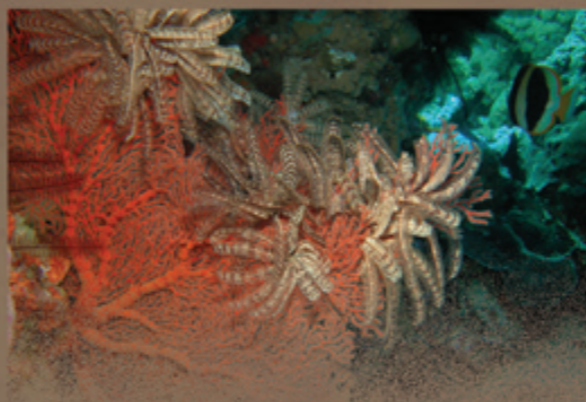
Lord Howe Island is home to a great diversity of sea urchins, some of which burrow just beneath the sand in the lagoon floor, and many reef shells have very sharp edges, so wear shoes when wading or reef walking.

This map provides a ready-reference guide to the location of zones in the Lord Howe Island Marine Park. The Marine Parks Regulation 1999 (NSW) and the Lord Howe Island Marine Park (Commonwealth Waters) Management Plan include further detailed provisions and should be consulted for legal interpretation.

Geographical positions where shown are in degrees and decimal minutes using the datum WGS84 and can be found directly from GPS units.



EAST COAST AND SHELF SANCTUARY ZONE



East Coast & Shelf Sanctuary Zone

This zone protects a representative sample of cliff and boulder rocky shores and associated submerged rocky reefs that are characteristic of the southern end of Lord Howe Island.

Further offshore, this zone protects a segment of the Lord Howe Island shelf and its range of habitats which vary according to depth, slope and substrate type, including relic reefs, a vestige of lower sea levels, which provide vertical relief for attachment by a diversity of current-dependant filtering organisms.